

# Power Point for Television

Use these Tips to help make your Power Point presentations look better on Television.

## Fonts

- Use Bold fonts that stand out and are easy to read.
- Avoid using thin script fonts
- Stick with a 28pt font or Higher. Small fonts can be very difficult to read on TV.

Arial Black  
**Antique Oakland**  
**Cooper Black**  
**Eras Bold ITC**  
**Franklin Gothic Medium**

*Good Fonts for TV*

Agency FB  
 Arial Narrow  
 Bradley Hand ITC  
*Lucida Handwriting*  
*Script MT Bold*

*Avoid the Script Fonts*

## Lines and Charts

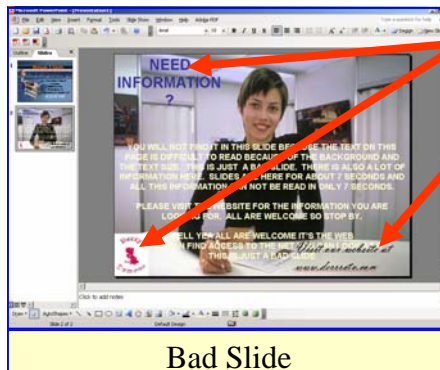
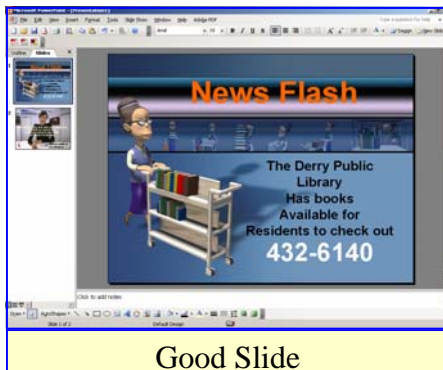
- Avoid using thin lines. Thin lines tend to jitter on TV
- Use 3pt lines or thicker
- Don't forget about lines in charts and graphs
- Don't forget about the font size and style in charts

— 3 pt  
 — 4 1/2 pt  
 — 6pt

*Use thicker lines*

## Backgrounds, Color, and Borders

- Use colors that stand out and are contrasting.
- Avoid Bright Reds. Bright Reds streak if a TV is not properly calibrated.
- Avoid stripes that are close together.
- Avoid Backgrounds that have large areas of contrasting colors
- Not every television displays pictures exactly the same. To keep text or images from being cut off leave a 1/2 inch boarder around the entire slide.



Information will be cut off.

Text is small and hard to read.

The white text works on the woman's shirt but not the background.

NOTE: The resolution of a computer screen is much better than NTSC broadcast signals.

Make your slides as clear as you can.

**Keep your message short and understandable.**

**Slides are only displayed for a short period of time.**